

*finesse*

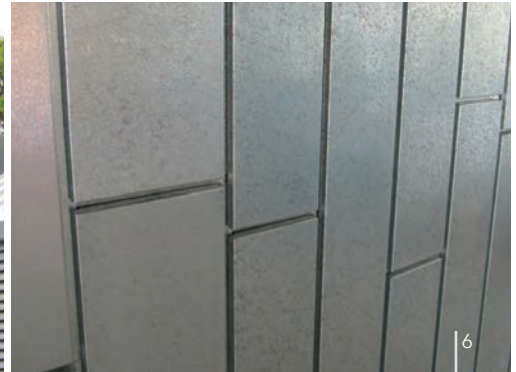




*finesse* | INTERLOCKING PANEL

" Every building envelope is a blank canvas upon which the architect exhibits their creative passion "

# INTERLOCKING PANEL | *finesse*



1

North Lakes  
Health Precinct  
Queensland

2

North Lakes  
Health Precinct  
Queensland

3

Private Residence  
Adelaide

4

East Marden School  
South Australia

5

Adelaide Zoo  
South Australia

6

East Marden School  
South Australia



*finesse* | SHADOWLINE 305



1

Brighton School,  
South Australia

2

Private Residence  
North Shore  
Sydney

3

Adelaide Zoo  
South Australia

4

Homemaker Centre  
South Australia

5

Adelaide Zoo  
South Australia

6

Gleeson College  
South Australia

SHADOWLINE 305 | *finesse*







finesse NEO ROMAN



1  
Old Government  
House  
Brisbane

2  
Old Government  
House  
Brisbane

3  
Royal Adelaide  
Golf Course  
South Australia

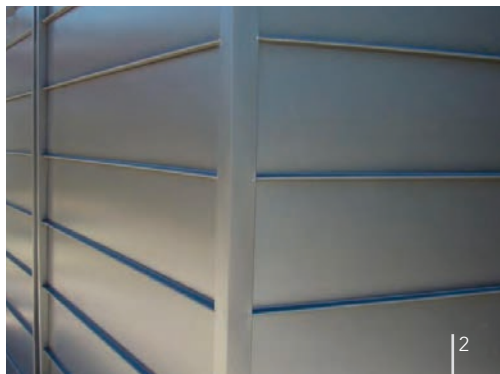
4  
Meriden College  
Strathfield  
New South Wales

5  
Private Apartments  
Sydney

6  
Meriden College  
Strathfield  
New South Wales



# finesse | NAILSTRIP



1  
Private Residence  
South Australia

2  
Cabra Vale  
Diggers Club  
New South Wales

3  
Cabra Vale  
Diggers Club  
New South Wales

4  
Adelaide Zoo  
South Australia

5  
Private Residence  
South Australia

6  
Adelaide Zoo  
South Australia



NAILSTRIP | *finesse*



*finesse* | MILLENNIUM







1  
Private Residence  
South Australia

2  
Apartment  
Complex,  
Sydney

3  
Private Residence  
South Australia

4  
Apartment  
Complex,  
Sydney

5  
Private Residence  
South Australia

6  
Apartment  
Complex,  
Sydney



# PROFILES & MATERIALS | *finesse*



Interlocking Panel



Shadowline



Millennium



Neo Roman



Nailstrip



## MATERIALS

Colorbond®  
Colorbond® Ultra  
Colorbond® Metallic  
Zincalume®  
Custom colours  
Stainless Steel  
Aluminium  
Copper

Colours and materials are subject to availability and minimum order quantities. The gauge will be determined by the dimensions and profiles selected.  
**Contact your local Fielders Architectural representative for technical assistance or phone Fielders on 1800 182 255.**